

45/99

TOWN PLACE CLUB VILLAS

A PART OF VIA VERDE P.U.D.
BEING A PORTION OF SECTION 23, TOWNSHIP 47 SOUTH, RANGE 42 EAST,
PALM BEACH COUNTY, FLORIDA.

Prepared By: CRAIG A. SMITH & ASSOCIATES, CONSULTING ENGINEERS & SURVEYORS, CORAL SPRINGS, FLORIDA. By: Edward Mizo, P.L.S. No 3376.

BOCCA DEL MAR NO 4 PG 30, PG 85-86

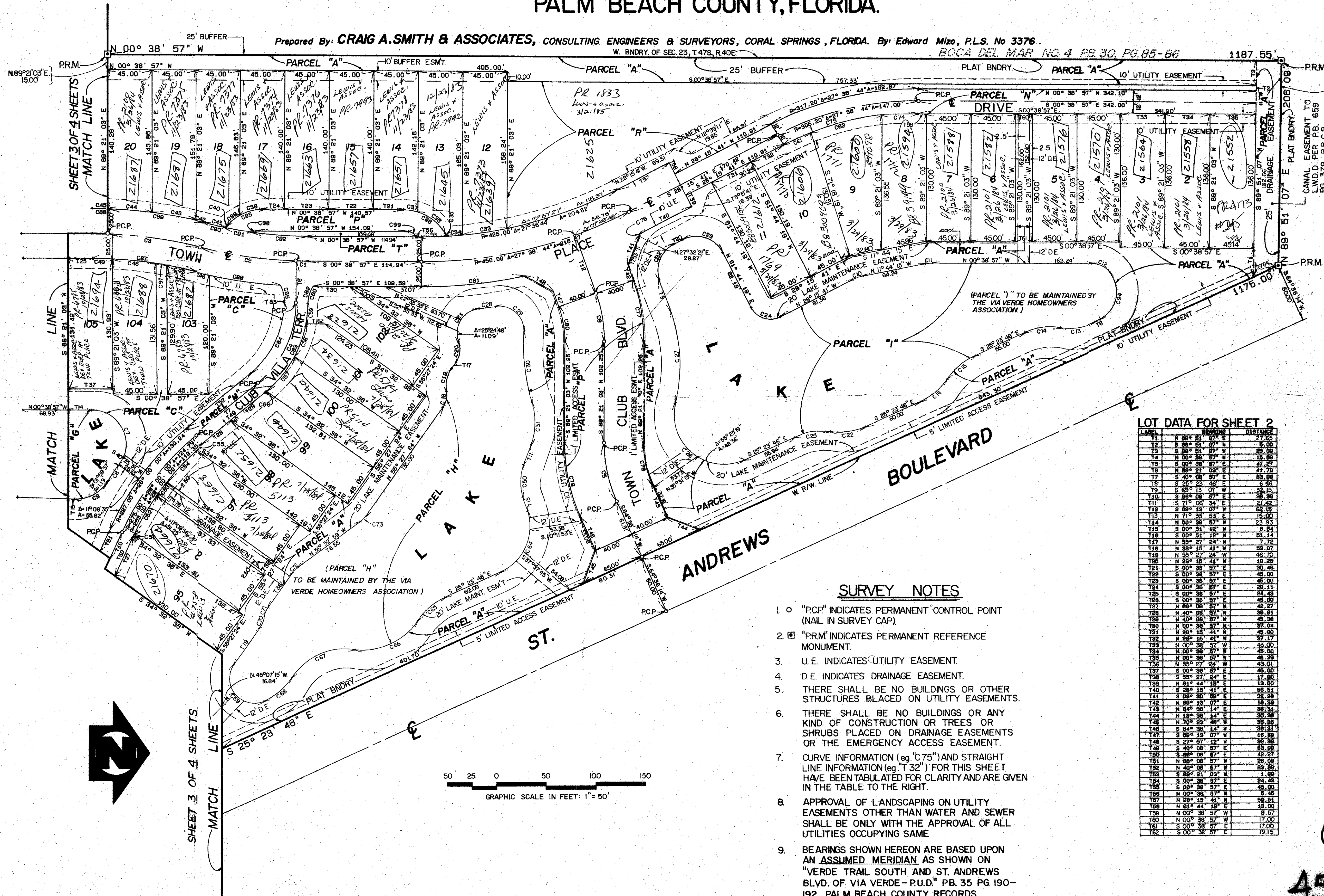
99

STATE OF FLORIDA
COUNTY OF PALM BEACH S.S.

THIS PLAT WAS FILED FOR
RECORD AT _____ ON THE
_____ DAY OF _____
1982, AND DULY RECORDED IN
PLAT BOOK _____ PAGES.

JOHN B. DUNKLE
CLERK OF CIRCUIT COURT
BY _____

SHEET 2 OF 4 SHEETS



LOT DATA FOR SHEET 2

LABEL	RADIUS	CENTRAL ANGLE	ARC LENGTH
C1	484.48	01° 30' 17"	11.84
C2	484.48	13° 39' 48"	89.32
C3	105.00	50° 36' 00"	82.18
C4	140.00	24° 44' 48"	48.47
C5	343.00	12° 55' 31"	74.20
C6	313.00	03° 57' 50"	21.38
C7	37.50	05° 31' 25"	38.50
C8	37.50	11° 05' 18"	7.28
C9	232.00	48° 05' 00"	20.38
C10	66.25	31° 53' 27"	36.87
C11	66.25	31° 53' 27"	36.87
C12	66.25	31° 53' 27"	36.87
C13	66.25	31° 53' 27"	36.87
C14	66.25	31° 53' 27"	36.87
C15	66.25	31° 53' 27"	36.87
C16	66.25	31° 53' 27"	36.87
C17	66.25	31° 53' 27"	36.87
C18	66.25	31° 53' 27"	36.87
C19	66.25	31° 53' 27"	36.87
C20	66.25	31° 53' 27"	36.87
C21	66.25	31° 53' 27"	36.87
C22	66.25	31° 53' 27"	36.87
C23	66.25	31° 53' 27"	36.87
C24	66.25	31° 53' 27"	36.87
C25	66.25	31° 53' 27"	36.87
C26	66.25	31° 53' 27"	36.87
C27	66.25	31° 53' 27"	36.87
C28	66.25	31° 53' 27"	36.87
C29	66.25	31° 53' 27"	36.87
C30	66.25	31° 53' 27"	36.87
C31	66.25	31° 53' 27"	36.87
C32	66.25	31° 53' 27"	36.87
C33	66.25	31° 53' 27"	36.87
C34	66.25	31° 53' 27"	36.87
C35	66.25	31° 53' 27"	36.87
C36	66.25	31° 53' 27"	36.87
C37	66.25	31° 53' 27"	36.87
C38	66.25	31° 53' 27"	36.87
C39	66.25	31° 53' 27"	36.87
C40	66.25	31° 53' 27"	36.87
C41	66.25	31° 53' 27"	36.87
C42	66.25	31° 53' 27"	36.87
C43	66.25	31° 53' 27"	36.87
C44	66.25	31° 53' 27"	36.87
C45	66.25	31° 53' 27"	36.87
C46	66.25	31° 53' 27"	36.87
C47	66.25	31° 53' 27"	36.87
C48	66.25	31° 53' 27"	36.87
C49	66.25	31° 53' 27"	36.87
C50	66.25	31° 53' 27"	36.87
C51	66.25	31° 53' 27"	36.87
C52	66.25	31° 53' 27"	36.87
C53	66.25	31° 53' 27"	36.87
C54	66.25	31° 53' 27"	36.87
C55	66.25	31° 53' 27"	36.87
C56	66.25	31° 53' 27"	36.87
C57	66.25	31° 53' 27"	36.87
C58	66.25	31° 53' 27"	36.87
C59	66.25	31° 53' 27"	36.87
C60	66.25	31° 53' 27"	36.87
C61	66.25	31° 53' 27"	36.87
C62	66.25	31° 53' 27"	36.87
C63	66.25	31° 53' 27"	36.87
C64	66.25	31° 53' 27"	36.87
C65	66.25	31° 53' 27"	36.87
C66	66.25	31° 53' 27"	36.87
C67	66.25	31° 53' 27"	36.87
C68	66.25	31° 53' 27"	36.87
C69	66.25	31° 53' 27"	36.87
C70	66.25	31° 53' 27"	36.87
C71	66.25	31° 53' 27"	36.87
C72	66.25	31° 53' 27"	36.87
C73	66.25	31° 53' 27"	36.87
C74	66.25	31° 53' 27"	36.87
C75	66.25	31° 53' 27"	36.87
C76	66.25	31° 53' 27"	36.87
C77	66.25	31° 53' 27"	36.87
C78	66.25	31° 53' 27"	36.87
C79	66.25	31° 53' 27"	36.87
C80	66.25	31° 53' 27"	36.87
C81	66.25	31° 53' 27"	36.87
C82	66.25	31° 53' 27"	36.87
C83	66.25	31° 53' 27"	36.87
C84	66.25	31° 53' 27"	36.87
C85	66.25	31° 53' 27"	36.87
C86	66.25	31° 53' 27"	36.87
C87	66.25	31° 53' 27"	36.87
C88	66.25	31° 53' 27"	36.87
C89	66.25	31° 53' 27"	36.87
C90	66.25	31° 53' 27"	36.87
C91	66.25	31° 53' 27"	36.87
C92	66.25	31° 53' 27"	36.87
C93	66.25	31° 53' 27"	36.87
C94	66.25	31° 53' 27"	36.87
C95	66.25	31° 53' 27"	36.87
C96	66.25	31° 53' 27"	36.87
C97	66.25	31° 53' 27"	36.87
C98	66.25	31° 53' 27"	36.87
C99	66.25	31° 53' 27"	36.87
C00	66.25	31° 53' 27"	36.87

SURVEY NOTES

1. "PCP" INDICATES PERMANENT CONTROL POINT (NAIL IN SURVEY CAP).
2. "PRM" INDICATES PERMANENT REFERENCE MONUMENT.
3. U.E. INDICATES UTILITY EASEMENT.
4. D.E. INDICATES DRAINAGE EASEMENT.
5. THERE SHALL BE NO BUILDINGS OR OTHER STRUCTURES PLACED ON UTILITY EASEMENTS.
6. THERE SHALL BE NO BUILDINGS OR ANY KIND OF CONSTRUCTION OR TREES OR SHRUBS PLACED ON DRAINAGE EASEMENTS OR THE EMERGENCY ACCESS EASEMENT.
7. CURVE INFORMATION (eg "C75") AND STRAIGHT LINE INFORMATION (eg "T 32") FOR THIS SHEET HAVE BEEN TABULATED FOR CLARITY AND ARE GIVEN IN THE TABLE TO THE RIGHT.
8. APPROVAL OF LANDSCAPING ON UTILITY EASEMENTS OTHER THAN WATER AND SEWER SHALL BE ONLY WITH THE APPROVAL OF ALL UTILITIES OCCUPYING SAME.
9. BEARINGS SHOWN HEREON ARE BASED UPON AN ASSUMED MERIDIAN AS SHOWN ON "VERDE TRAIL SOUTH AND ST. ANDREWS BLVD. OF VIA VERDE - P.U.D." PB. 35 PG 190-192, PALM BEACH COUNTY RECORDS.

0323-013

45/99

Town Place Club Villas